



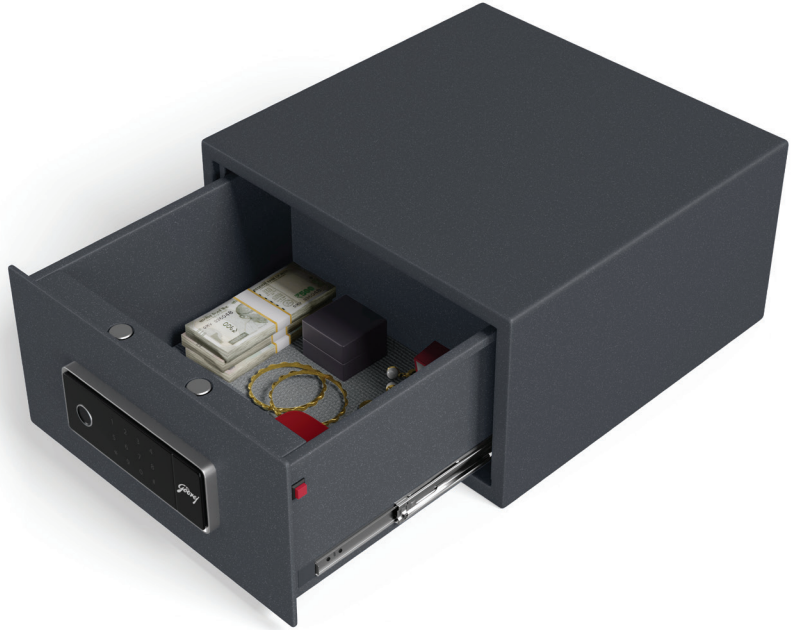
Convenience and security just a SLIDE away

NX PRO Slide

Your security needs are evolving – and so should your locker. The NX Pro Slide combines 10X stronger construction with cutting-edge dual mode access and advanced safety features. Its sleek drawer-style design, motorised lock and voice acknowledgements make safeguarding your valuables effortless.



10X *Stronger than a Wooden Cupboard



Motorised Lock:
Enhanced safety with smooth, effortless operation

Voice-Based Acknowledgements:
Smart feedback for intuitive use

Dual Mode Access – Digital + Biometric:
Convenience and security at your fingertips

Multi-User Functionality:
Supports up to 10 user codes/1 master code of 6 digits and 50 fingerprints

Auto Drawer Locking:
Added convenience with automatic security

LED Illumination:
Enhanced visibility for your stored items

Customisable Access Modes:
Set single or dual access for personalised protection

Auto-Freeze Security:
Device auto-locks after five consecutive incorrect access attempts

Drawer-Style Opening:
Designed for easy access and elegant functionality

Drawer Open Overtime Alert:
Enhanced Safety with Timely Notifications

Anchoring Provision:
Ensures secure and stable installation

In-Built I-Buzz Alarm System:
Stay alert to unauthorised access attempts

USB and Key for Emergency Access:
Reliable access, even in unexpected situations

Specifications

Model	NX PRO Slide	
External Dimensions (cm)	Height	19.5
	Width	35.5
	Depth	40
Net Weight (kg)	13.4	
Volume (ltr)	13	

*Reference to strength as 10X stronger is based on controlled in-house tests

Ready to elevate your security?



Godrej & Boyce Mfg. Co. Ltd. (A Part of Godrej Enterprises Group)
Godrej Security Solutions, Plant No. 17, Pirojshanagar, Vikhroli, Mumbai - 400079

Phone: 080-6743-6743 (Service) | Toll Free: 1800 209 9955 (Sales) | Whatsapp Support: +91 9321665511 (Service)

Web: www.godrejenterprises.com | Email: secure@godrej.com (Sales), secare@godrej.com (Service)

Follow us: Facebook: www.facebook.com/GodrejSecure | Twitter: www.twitter.com/godrejsecure

The contents and information on the catalogue is for general purposes and is provided on an "as is" basis. The recommendations of level of strength are relative and completely depend on the nature of tools used for any attack. All safes can be broken open given sufficient time, tools, torch (basic or simple home tools), expert skill and access. All warranties, recommendations and representations of any kind are disclaimed, including the implied warranties of merchantability and fitness for a particular use. The company disclaims any claims, losses, demands or damages of any kind whatsoever including but not limited to direct, indirect, incidental, or consequential loss or damages, economic loss, or otherwise arising out of or resulting by reason or in consequence of any breaking open of any safes, video door phones, burglar alarm systems, or any theft, fire, robbery, fraud or other wrongful act done by any party with regard to safes, video door phones, burglar alarm systems. The specifications, prices and features of the product may be subject to change. The categorization of safes into 10X, 100X, and 250X signifies the relative strength and security of each safe compared to a standard wooden cupboard. This categorization is based on controlled in-house testing. We are certified under ISO 9001:2015, ISO 14001:2015, and ISO 45001:2018, demonstrating our commitment to quality, environmental responsibility, and occupational health and safety.