

DESIGNED
FOR THE
WORLD

DEFENDER PRIME



DEFENDER PRIME

The high end Godrej Defender Prime Safe will be the first of its kind from the house of Godrej. The Defender Prime is designed on a platform suited to the needs of consumers across the globe, thus bringing international quality and looks for our Indian customers. The Defender Prime is the solution to the customers needs against all possible burglary attacks. Reinforced with enhanced barrier material **(DDB and TDR)**, developed by Godrej through rigorous research and development, it now offers excellent resistance to threats which include cutting, breaking and drilling using all types of mechanical and electrical tools.

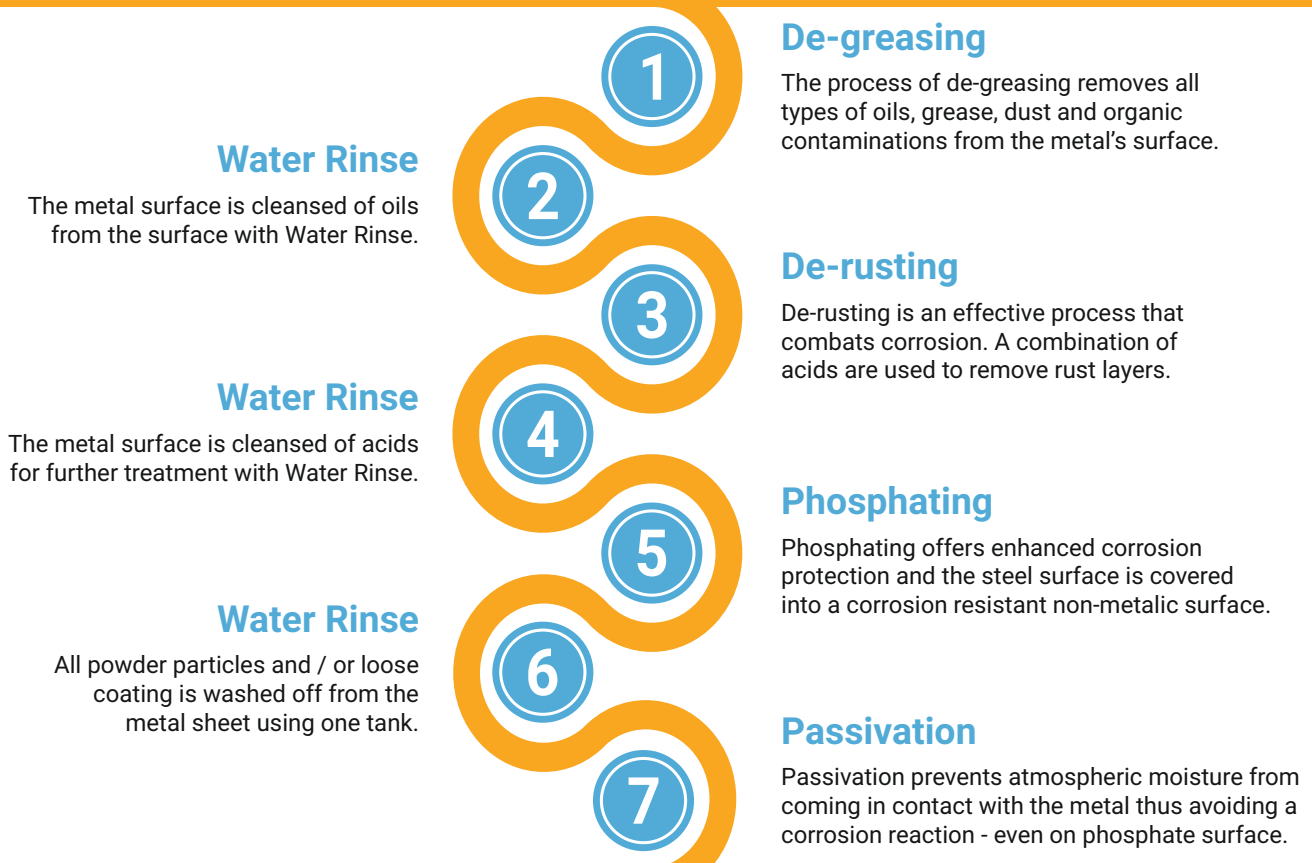
Eg - Oxyacetylene torch, Breaking hammers etc.

The new single-piece wrap-around construction provides even more formidable strength to this already top of the range safe from Godrej Security Solutions. The zinc plated bolted mechanism offers superior corrosion resistance with additional features that provide convenience to change or additional secondary locks in line with the requirements that may arise in the future. Manufactured in the state-of-the-art facility at Vikhroli, Mumbai, the Defender Prime Safe incorporates the perfect blend of global design and indigenous manufacturing marvel.

QUALITY LEADERSHIP

At Godrej Security Solutions we always aim to stay one step ahead. Along with pioneering innovative products, we also strive to offer quality security solutions that go the extra mile. Godrej Security Solutions is a recipient of the most coveted award for "TPM Excellence - Category A" by JIPM (**Japan Institute of Plant Maintenance**), also conferred upon the FreenCo award for Green Company rating system. When you buy a Godrej product you can be rest assured that you are receiving a quality product that has gone through a stringent. Pre-Treatment Process followed by advanced checks and measures. The Godrej 7 step 12 Tank Pre-Treatment Process is just one such example of how we do not leave any stone unturned in ensuring quality as well as longevity of our products.

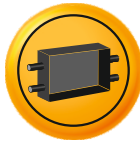
All godrej steel components undergo a **7 STEP 12 TANK PRE-TREATMENT PROCESS** to combat rusting



FEATURES



Strong and seamless body with fully welded multi-corner bend construction without a single rivet and one-piece wrap around door construction



Strong shooting bolts to secure the door behind the jamb box against dislodging



Two-step door and frame construction for higher resistance against fire and burglary



Sets the safe into a deadlock with two relockers and an additional beta relocker to protect from precision attack on the lock.



List-off hinges door construction which facilitates removal of door for ease in transportation & in service



Dual control high precision 8-lever locks protected with unique drill-defeate shield in the door



Armoured with Double Duty barrier (DDB) material in the door and the body



Class C safes have successfully withstood the one-hour fire resistance test carried out at C.B.R.I., Roorkee, India.



Enhanced Torch and Drill Resistant Matrix used in TRTL classes of safes (Class BB and above)



Tested as per BIS standard IS 550:2014

AVAILABLE MODELS



PRIME 26

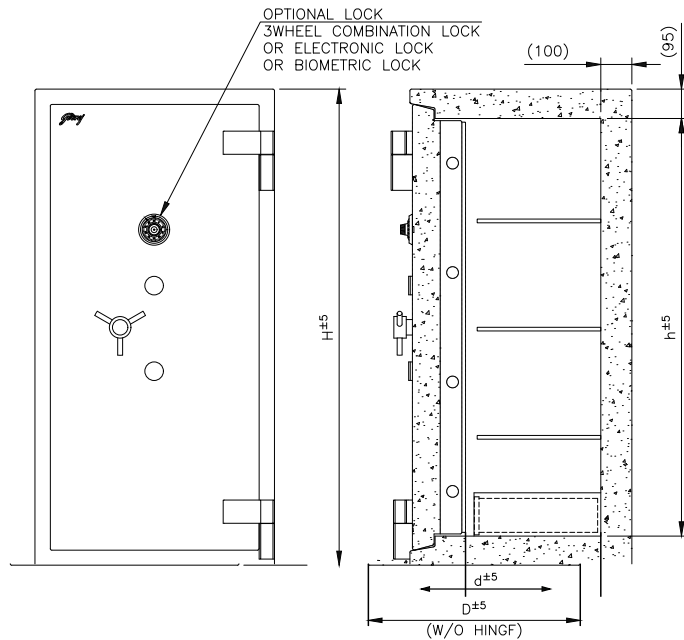
PRIME 31

PRIME 41

PRIME 49

PRIME 61

*height indicated in inch



	Class C (TL 30 D x TL 10 x 5 - FR 30)		Class BB (TRTL 15 x 6)		
	External (HXWXD)	Weight (kgs)	External (HxWxD)	Weight (kgs)	Internal (hxwxd)
26	652 X 521 X 570	400	702 X 571 X 624	640	462 x 331 x 288
31	778 X 623 X 660	610	828 X 673 X 714	900	588 x 433 x 378
41	1032 X 623 X 660	740	1082 X 673 X 724	1160	842 x 433 x 378
49	1236 X 775 X 720	1080	1286 X 825 X 773	1680	1046 x 585 x 436
61	1541 X 775 X 720	1280	1591 X 825 X 773	2050	1351 x 585 x 436

	Class A (TRTL 30 x 6)		Class AA (TRTL 60 x 6)		
	External (HXWXD)	Weight (kgs)	External (HxWxD)	Weight (kgs)	Internal (hxwxd)
26	702 X 571 X 624	*	742 X 611 X 675	*	462 x 331 x 288
31	828 X 673 X 714	*	868 X 713 X 775	*	588 x 433 x 378
41	1082 X 673 X 714	*	1122 X 713 X 775	*	842 x 433 x 378
49	1286 X 825 X 773	*	1326 X 865 X 825	*	1046 x 585 x 436
61	1591 X 825 X 773	*	1631 X 865 X 825	*	1351 x 585 x 436

Important:

- Please check the load carrying capacity of the floor from structural engineers, if the safe is to be kept on the first floor or above. Place the safe preferably on a beam.
- All dimensions are in mm. Tolerance: Weight: ± 10%. Dimensions: ± 5%
- Weight in kgs. (will be made available on request)



Godrej Security Solutions, Regd. Office: Plant no. 17, Pirojshanagar, Vikhroli, Mumbai - 400079
Toll Free No.: 1800 209 9955 (Sales / Service) | **Email:** secure@godrej.com (Sales), secare@godrej.com (Service)
Website: www.godrejsecure.com | **Follow us:** www.facebook.com/GodrejSecure | www.twitter.com/godrejsecure

The content and information on the catalogue is for general purpose and is provided on 'as is' basis. The recommendations of level of strength are relative and completely dependent on the nature of tools used for any attack. All safes can be broken open given sufficient time, tools, torch (basic or simple home tools), expert skill and access. All warranties, recommendations and representations of any kind mentioned herein are disclaimed, including the implied warranties of merchant ability and fitness for a particular use. The company disclaims any claims, losses, demands, or damages of any kind whatsoever arising out of or resulting by reason or in consequence of any illegal breaking open of Safes, Alarm Systems or any theft, fire, robbery, fraud or other wrongful act done by any third party with regard to Safes, Alarm Systems including but not limited to direct, indirect, incidental or consequential loss or damages, compensatory damages, injury, economic loss, or otherwise resulting from theft, fire, robbery, fraud or other wrongful act done by any third party. The specifications, prices and features of the products may be changed at the sole discretion of the company without any prior notice. Limited products are shown here due to space limitations. Please contact the dealer to know more.
 ISO 9001:2015 / ISO 14001:2015 / BS OHSAS 18001:2015